

8. About This Manual

Manual no. Issue date Version Note/ Revision History
201A-Z01 Sep 2006 1 non

The specification, price and appearance of this manual could be revised without prior notice.

9. Warranty

When the product is used as specified, and failure occurs due to manufacturing issues within the warranty period (one year from date of purchase), the product will be repaired without charge. The warranty will not be re-issued under any circumstances, please keep it safely.

10. Contact Us

ARK-DESIGN Co.Ltd. 〒192-0362 32-5 MATUKI HACHIOUJI JAPAN
<http://www.arkdesign.co.jp>

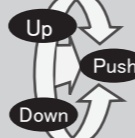
11. Operation Manual

Switch Operation

It is a saw saw switch which operates either right or left



It is a roller switch which can be scrolled up and down with a centre push to select desired item



Controller Display

Two modes of boosts can be set, only one mode can be lit at a time. When setting warning/peak display, only the selected mode flashes. No light on at metre mode.



This flashes signals the status of solenoid valve. When solenoid valve is not active, light is not on.

The 7 segments display the pressure (x100kPa) in real time. It also displays the coefficients and setting values in the setting mode.

PEAK light is on when displays peak hold. The light flashes when peak value is resetting.

WARNING light is on when setting the warning value. The light flashes when the boost is over the warning default value.

The full colour LED changes its colour according to the boost, when the boost value is over the warning default, it flashes. Also, when displaying the peak hold, the LED colour changes according to the peak value, the colour can be used to check the actual boost value. When the colour changes according to the boost, the warning flash has the priority.

Boost colour change
In the range of -100kPa to -0.00kPa, colour changes from dark to light blue.
From +0.00kPa, the full colour changes from green- yellow- orange- red, the red shows the default pressure.
(At the factory default, the red is set to about 100kPa, please adjust this setting to match the desired boost preset).

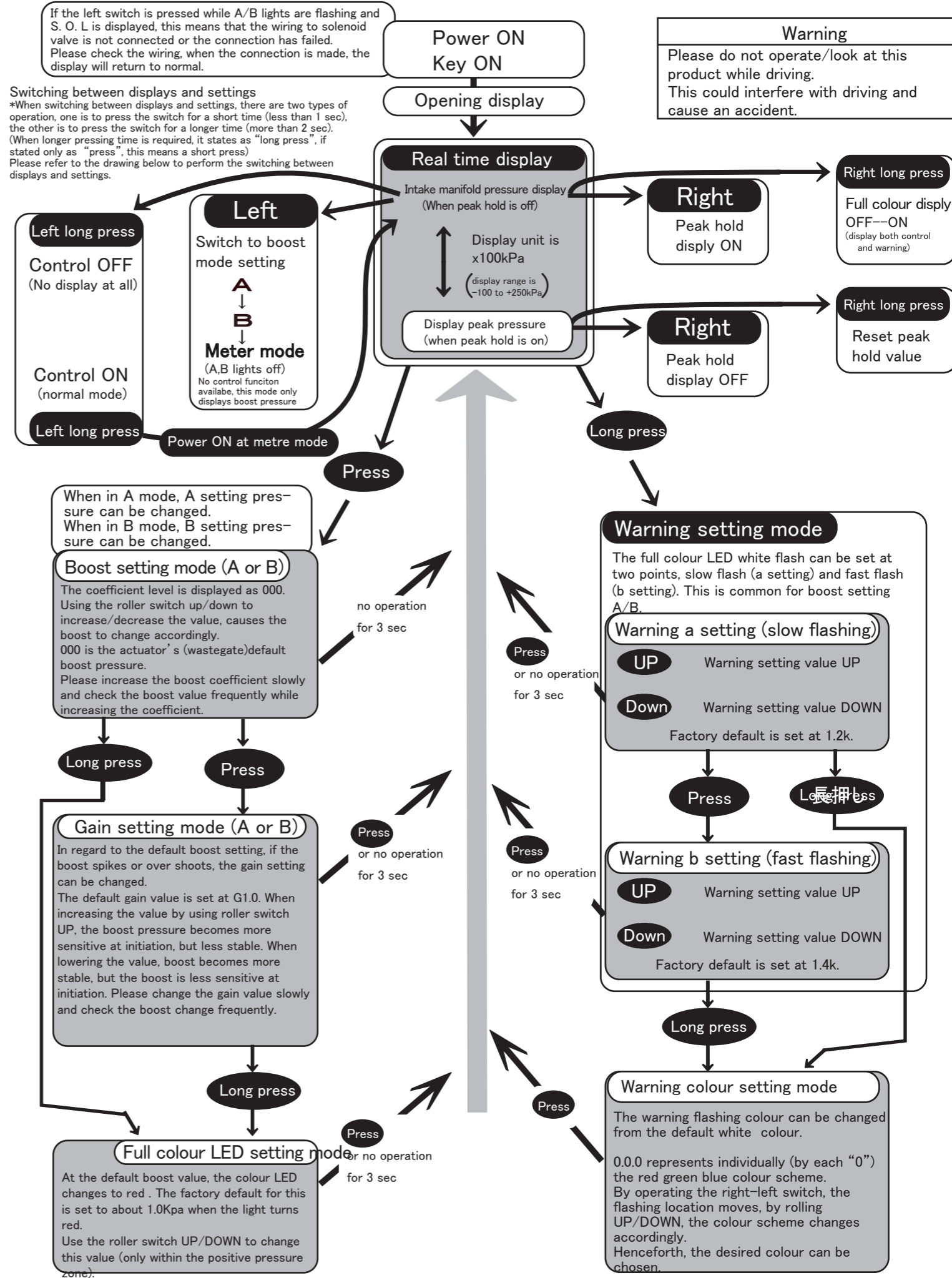
Boost setting method

- When installation confirmation is completed, turn the boost controller on and set it to meter mode (the meter mode does not control the boost, only displays boost), check the boost pressure displayed.
 - Set to A or B mode, get into the boost setting mode and check the boost level coefficients on display.
 - Confirm the boost is rising steadily when increasing the coefficient value from 0 slowly.
 - Repeat step 3 until the target boost pressure is reached.
- Caution- While in setting mode, the display is showing the coefficient level (not the boost level), please check the boost in the real time mode.
Caution- Over boost could cause engine damage, please be cautious about the setting value.
· When the boost hunting and/or over boost becomes serious, please set the gain according to the transition diagram.
(If boost is stable it does not need to be changed from the factory default)

Operating Transition

If the left switch is pressed while A/B lights are flashing and S. O. L is displayed, this means that the wiring to solenoid valve is not connected or the connection has failed. Please check the wiring, when the connection is made, the display will return to normal.

Switching between displays and settings, there are two types of operation, one is to press the switch for a short time (less than 1 sec), the other is to press the switch for a longer time (more than 2 sec). (When longer pressing time is required, it states as "long press", if stated only as "press", this means a short press) Please refer to the drawing below to perform the switching between displays and settings.



Warning

Please do not operate/look at this product while driving. This could interfere with driving and cause an accident.